



Meaningful Innovation.

INSTRUCTION MANUAL

140mm MINI RAIL - 2PCS SCREW
2PCS RUBBER PADS



SKU	23069
-----	-------

INTRODUCTION

Thank you for selecting and buying V-TAC Product. V-TAC will serve you the best. Please read these instructions carefully & keep this user manual handy for future reference. If you have any another query, please contact our dealer or local vendor from whom you have purchased the product. They are trained and ready to serve you at the best.

MINI-RAIL FOR LANDSCAPE

Rail-less mounting solution for metal sheet roof

SKU	Colour
23069	Mini Rail



Flush roof



Framed module



Orientation portrait



Orientation landscape



Trapezoidal sheet



PRODUCT FEATURES

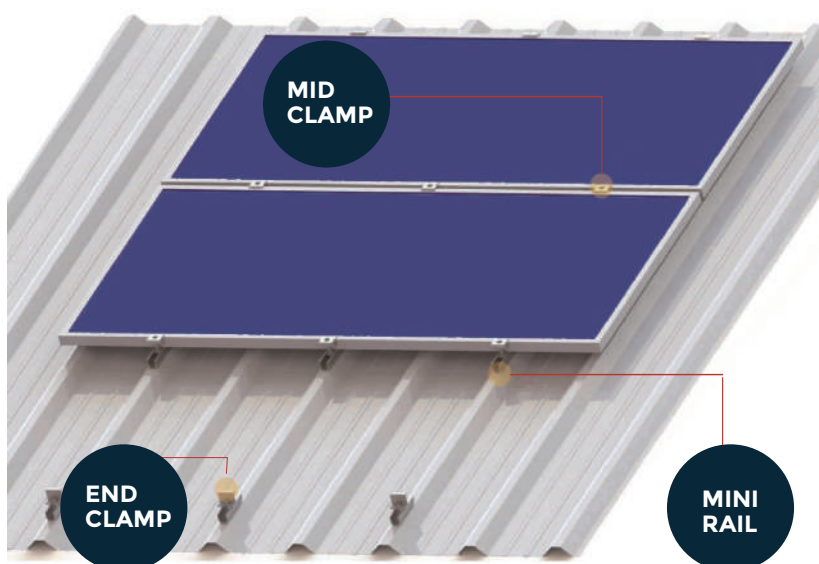
- Widely used for both crystalline modules.
- Easy & quick installation.
- Only 3 kinds of components in whole system fixation.
- All system components are made with high quality aluminum & stainless steel.
- The trapezoidal rib should be more than 20mm



Project site	Popular trapezoidal and IBR sheets
Slope of roof	Up to 60°
Max Building Height	Up to 20m
Wind Load	60m/s
Snow Load	2.0kn/m ²
Applicable Module	Frame / frameless module, crystalline/ thin film module
Module Orientation	Landscape
Standard	MCS, AS/NZS1170.2:2011
Material	Stainless steel 304, Al6005-T5

MINI-RAIL FOR LANDSCAPE

Rail-less mounting solution for metal sheet roof



**MINI
RAIL**

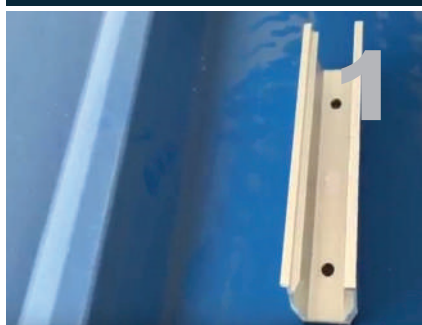


**END
CLAMP KIT**



**MID
CLAMP KIT**

KEY COMPONENTS



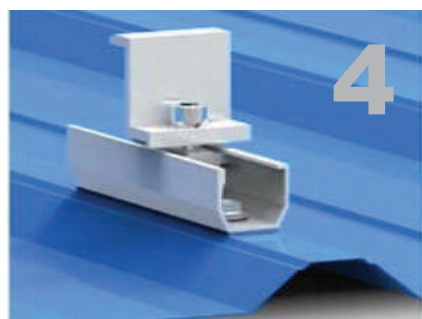
Mark the locations of mini rail.



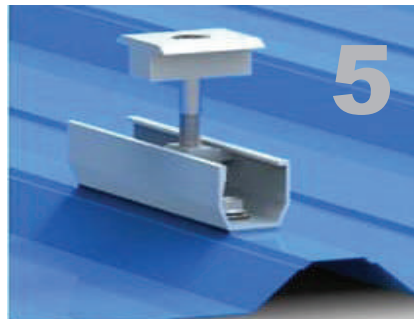
Each mini rail has been preassembled with one EPDM rubber pad.



Fasten the mini rail with metal sheet roof with 2pcs st6.3*25 tapping screw.



Install the end clamps with mini rail.



Install the mid clamps with mini rail.



Fix the module on the mini rail by mid clamps and end clamps.